

TEMORA

CONSTRUCTION NIGERIA LITD

COMPANY PROFILE

Contact Us

 +234(0)701 110 2220,  +234(0)811 311 1112

 No. 37 F9 Citec Mbora Estate-Abuj.

 temoraconstruction@gmail.com

THE CONTENT

[About Us](#)

04

[Mission & Vission](#)

06

[Company History](#)

07

[Founder](#)

08

[Our Projects](#)

09

[Products](#)

10

[Types of Elevators](#)

12

[Our Services](#)

14

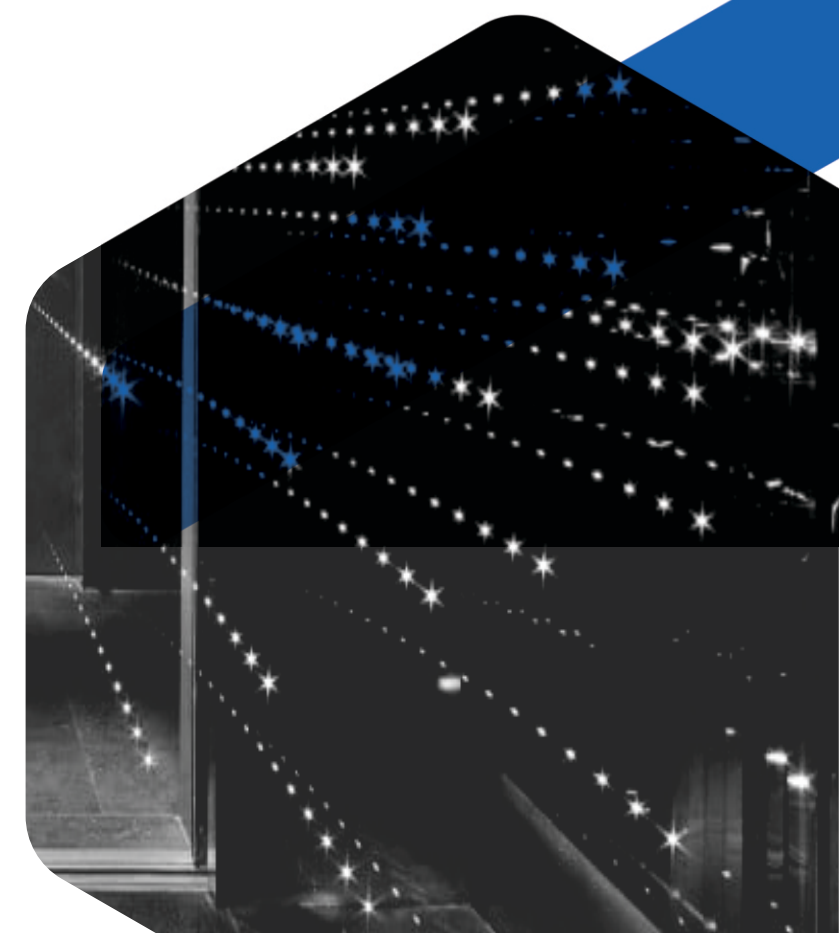
[Collaborative Brands](#)

15

[Contact](#)

16

COLLABORATIVE BRANDS





OUR SERVICES

Designing

Customized designed relatively to every project in specific.

Production & Installing Distributing

We produce the cabin, car frame, counter weight, rails brackets and other steel parts.

Maintenance

We serve our clients beyond installment, followed up with required maintainance.

We distribute multiple international branded elevator parts and

ABOUT US

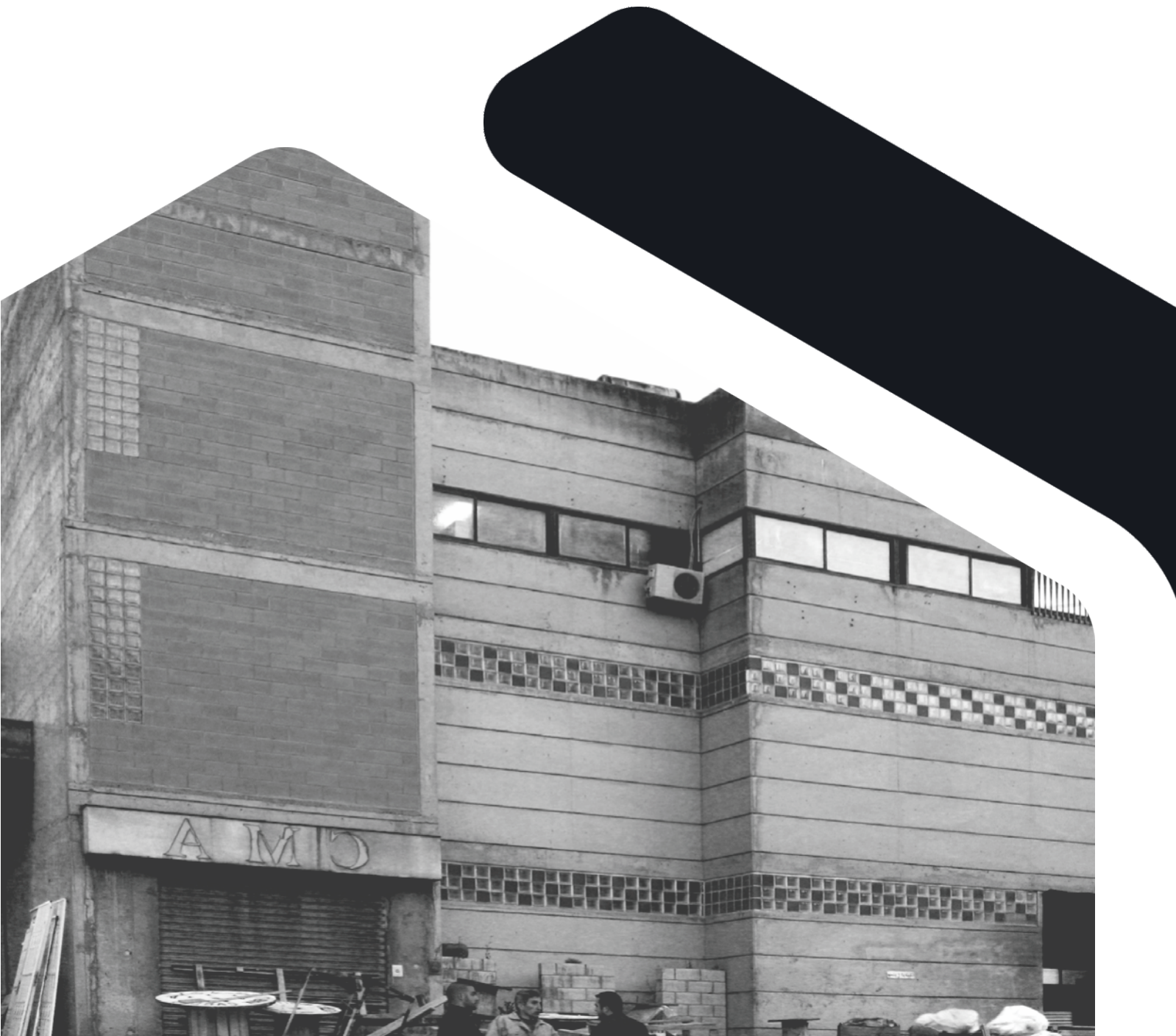
Our products are certified and our elevators respond to the latest technologies, respect new norms, safety regulations and consumer demands.

From our beginning as a sole distributor of numerous European elevator spare parts in the Lebanese market with a focus on the production of Car Frames, Counterweights, Machine Bases, Controllers, Doors and Cabins, we have evolved into earning a reputation in designing, producing, installing and maintaining elevators with specifications equivalent to international

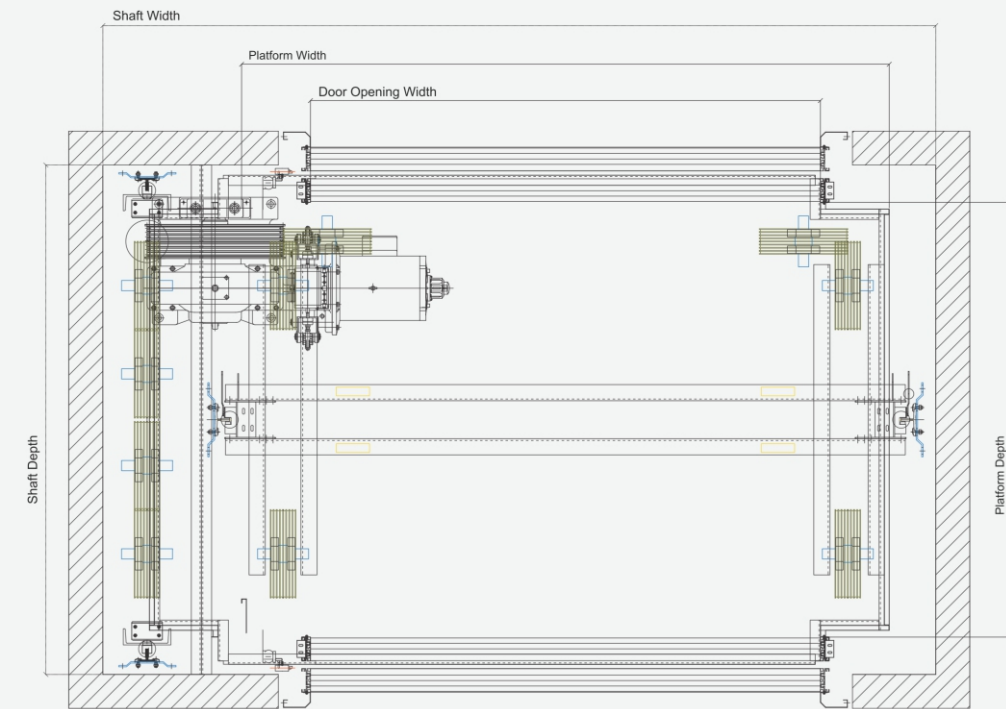


COMPANY PROFILE

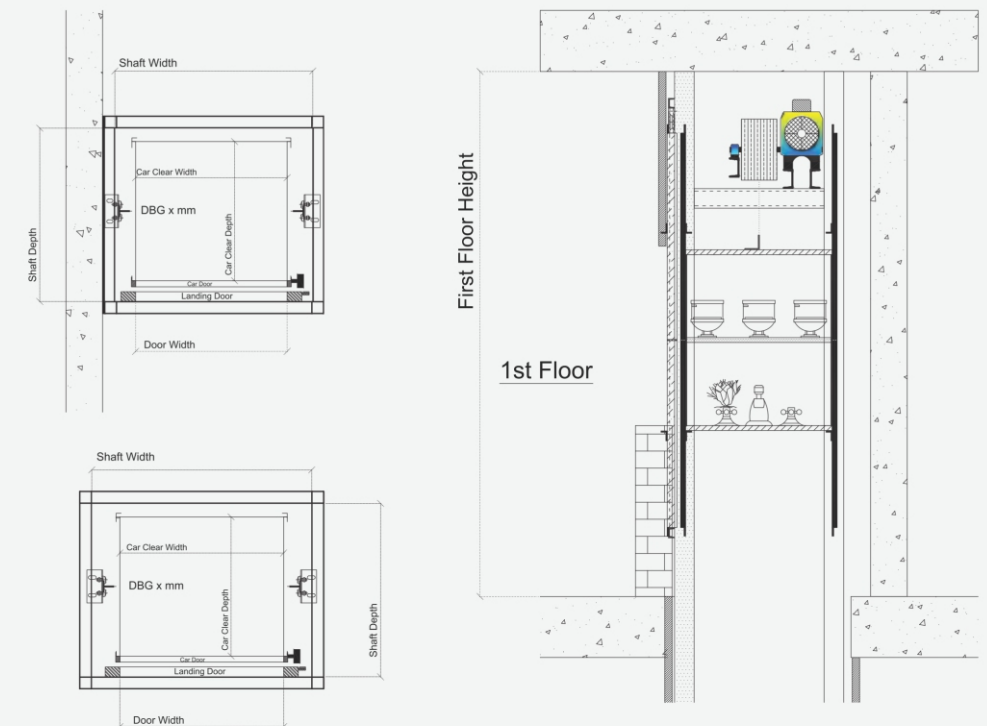
C.M.A Elevators (UCE) was first established in 1984 and has been on a pioneering ride ever since.



TYPES OF ELEVATORS



Commercial Elevator | Load

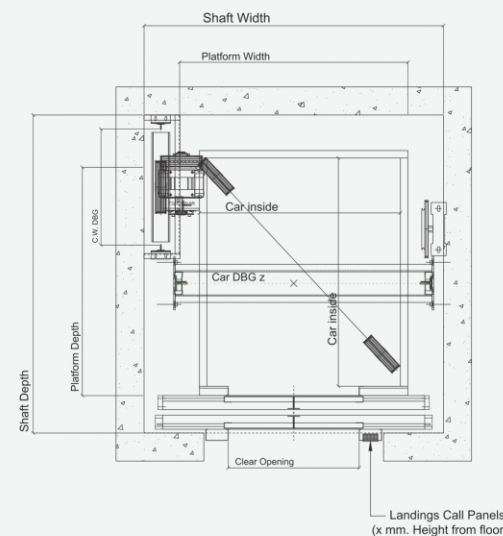
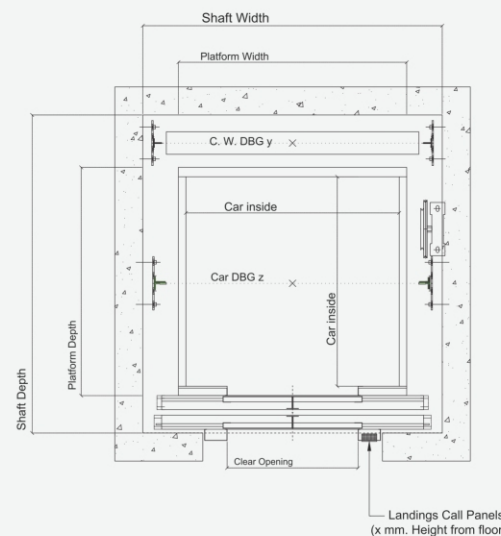


Service Elevator | Dumbwait-

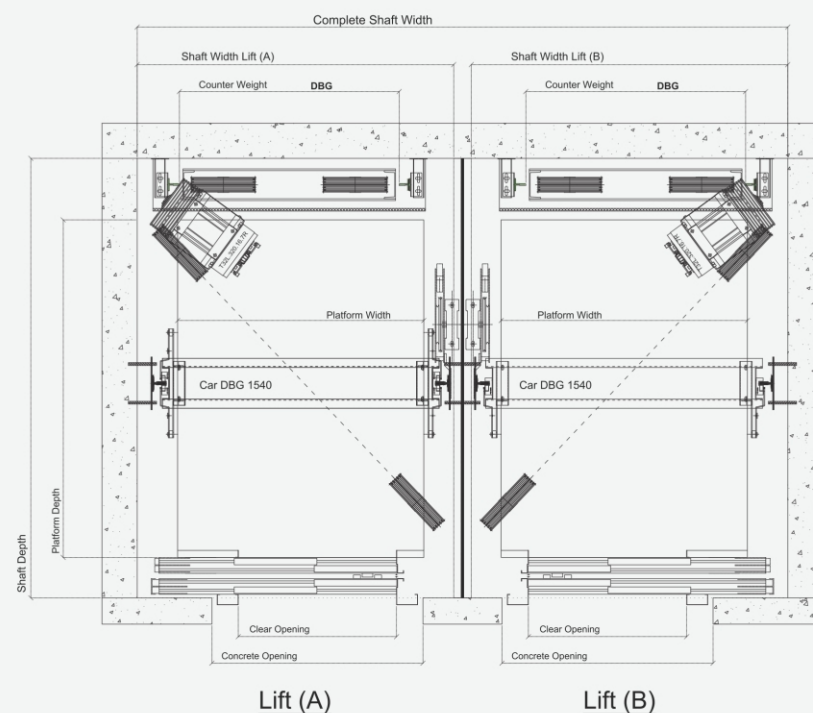
TYPES OF ELEVATORS

Passangers Lift with Machine

Gearless Roomless Passangers



Residential Elevator | Pas



Service Elevator | Hospital



Our line includes passenger, freight and dumbwaiter elevators, escalators & moving walks that can either operate on traction or hydraulic systems with a wide weight or speed range. Our gearless elevators were among the first to be installed in

Big range of elevator cabins, car operation panels and push buttons designs are available and our models are custom made to meet individual client requirements that are carefully studied and executed.

So far, we have installed more than 3800 elevator in Lebanon, the Middle East and Africa and we remain committed to the dedicated service of our clients in meeting all their elevator needs.

MISSION & VISION

Mission

Our mission is to become the leading elevator manufacturer in Ghana, by delivering innovative, safe and sustainable vertical transportation solutions that enhance people's mobility and convenience, while building long-lasting relationships with our

Vision

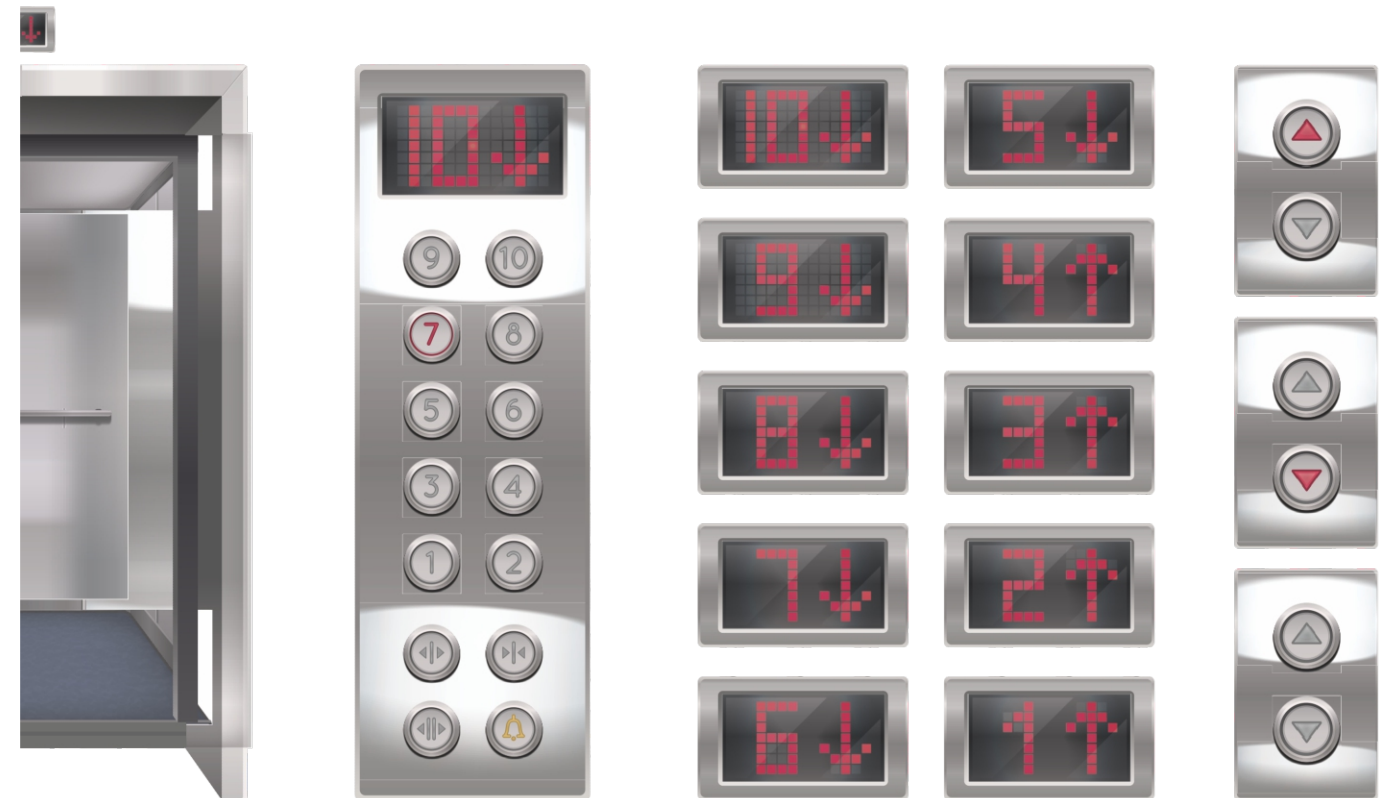
At our company, we envision a future where elevators are not just a means of transportation, but a tool for human progress. Our goal is to revolutionize the local construction and real-estate industries by introducing cutting-edge technology, superior quality and exceptional customer service. By inspiring confidence, fostering excellence and empowering the community, we aim to transform the vertical horizon of Ghana and

Accomplished Projects

At our company, we completed multiple international projects located in Kuwait, Doha - Qatar, Abu Dhabi, Algeria, Cotonou, Armenia, Russia, Saudi-Arabia, Jordan, Iraq, Oman, Nigeria, Armenia, Sierra Leone and Ghana.

In addition to multiple residential and commercial project in various cities in Lebanon.

PRODUCTS



Various customized material options depending on client requirement upon design approval as follows:

Flooring	Cabin Wall	Ceiling	Lighting
			
Marble	Mirror	Mirror	Spot light
			
Wood	Stainless Steel	Stainless Steel	Troffer Light
			
Moquette	Wood	Wood	Indirect Lighting
			
			LED Flat Panel Light

PRODUCTS



Our products can be customized to fit the design process and the consumers demand by being able to set dimensions that are beyond standards in height, depth, width and length.

We also provide high end finish with multiple mix of materials and variations depending on the proposed design.

This specific service makes us special in accom -

COMPANY HISTORY

- C.M.A For Elevators (UCE) was first established in 1984 and has been on a pioneering ride ever since.
- Due to an increasing market demand, in 1998 we relocated to a 3000 square meter facility and an additional 2500 Square meter warehouse, employing more than 60 people.
- During 1998, the company became introduced to the Gulf Market through Kuwait and Qatar.
- In 2010, we opened our first branch abroad in
- Last but not least, expanding in Ghana began in



OUR PROJECTS



Hotel Louis V
Dbayeh, Lebanon



Ghrawi Chocolate
Kfarshima, Lebanon



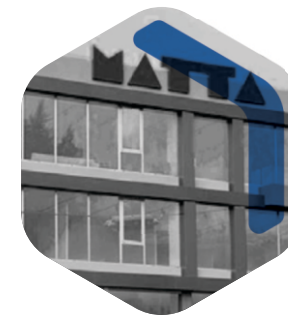
Vero Moda
Jordon



Metro Elevators
Algeria



Alpha
Kuwait



Gallerie Matta
Dekwaneh, Lebanon



Cosmocity
Beirut Souks, Lebanon



White Night Club
Dora Seaside, Lebanon



City Furniture
Dbayeh, Lebanon



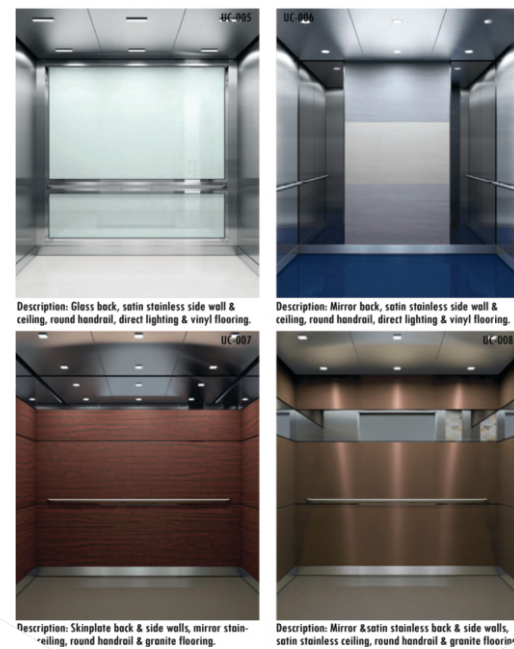
Mercedes Showroom
Dora, Lebanon



Tital El Fanar
Fanar, Lebanon



Monot Offices 1288
Achrafieh Monot, Lebanon



Description: Glass back, satin stainless side wall & ceiling, round handrail, direct lighting & vinyl flooring.

Description: Mirror back, satin stainless side wall & ceiling, round handrail, direct lighting & vinyl flooring.

Description: Skiplate back & side walls, mirror stainless ceiling, round handrail & granite flooring.

Description: Mirror & satin stainless back & side walls, satin stainless ceiling, round handrail & granite flooring.